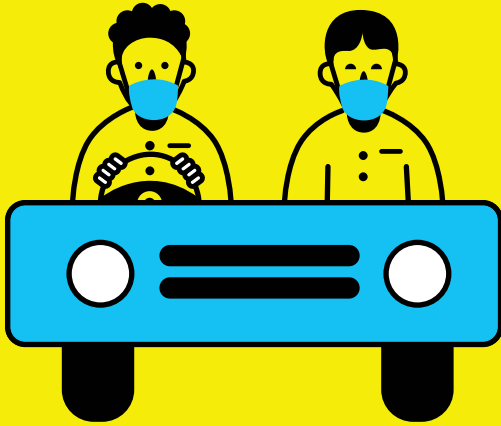


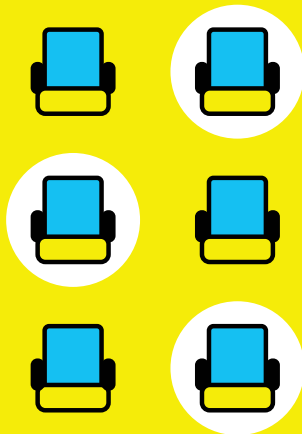
In case you need to use public transport.



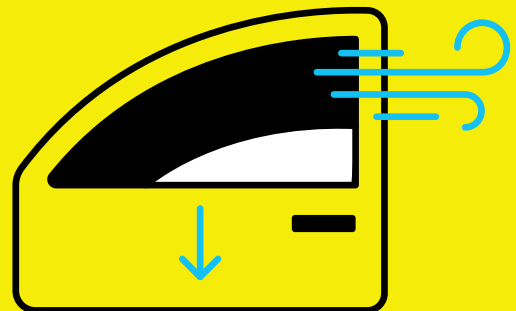
Make sure all occupants including the vehicle crew use masks.



Sanitize your hands before boarding.



Ensure that you maintain physical separation (1 person per row on each side of aisle in a zig zag manner).



Open the window for fresh air and ventilation. Avoid air conditioning system.



Always wear a mask



Wash hands every hour



Do not touch your face



Practice physical distancing